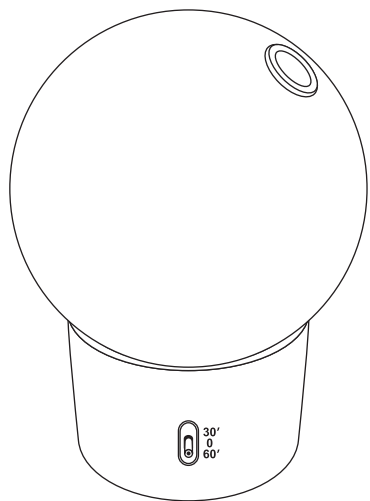
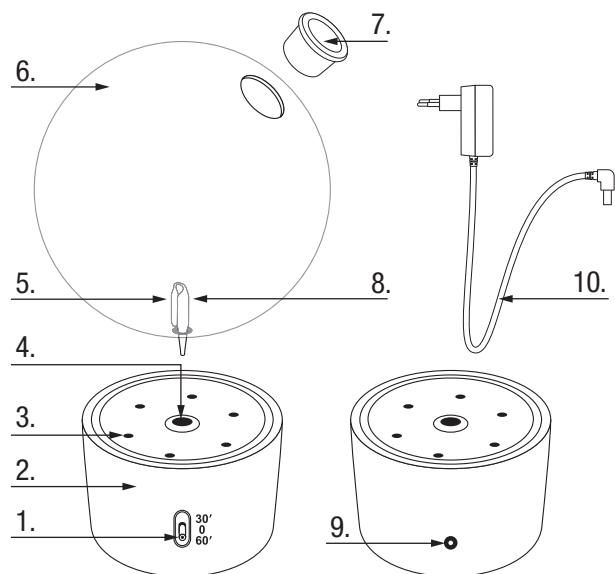


USER MANUAL

BULLE NEBULISING DIFFUSER



Technical features



- | | |
|--------------------------------------|---|
| 1. Switch | 7. Glass cap |
| 2. Wooden base | 8. Maximum level of essential oil (2/3 of the glass nozzle (5)) |
| 3. White LED lights | 9. Jack plug |
| 4. Mounting gasket for the glass top | 10. Adaptor |
| 5. Glass nozzle | |
| 6. Glass top | |

Read these instructions carefully and keep them in a safe place.

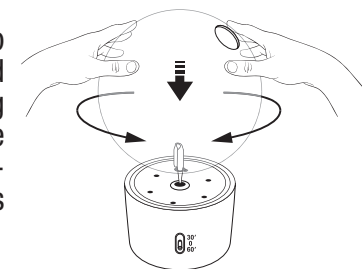
Precautions for use

- Do not cover the diffuser while it is running.
- The diffuser should only be used with the power supply provided with the device.
- Keep out of reach of animals. Children should be supervised to ensure that they do not play with the diffuser.
- If an essential oil comes into contact with your eyes, rinse thoroughly with vegetable oil and/or water. If the irritation persists, consult a doctor.
- In case of ingestion, do not make yourself vomit but get medical advice urgently.
- Do not use in damp places or handle with wet hands.
- Only for atmospheric diffusion; do not inhale.
- Unplug the device before handling it for any purpose, such as cleaning or storing.
- This device may be used by children of at least 8 years of age and by persons with reduced physical, sensory or mental abilities or lacking in experience or knowledge, if they are properly supervised or are given instructions on safe use of the device and if the potential risks have been understood.
- The device should be used only with essential oils recommended for diffusion. Avoid phenol, ketone and aldehyde-based essential oils. Essential oils are active substances which should be used in moderation, while observing the recommended amount and the diffusion time. Wash your hands after using essential oils. Always observe the detailed precautions for use of the essential oils used. The use of other substances may result in a toxic risk or a fire hazard.
- The level of the essential oil should not be higher than the glass nozzle (5) as this will prevent the device from running.
- Do not use in a place where there are pregnant or breast-feeding women, people with a history of epilepsy or convulsions or people sensitive to essential oils.
- Do not use where there are children under 7 years.
- If using the diffuser in the presence of children under 7 years follow the recommendations for essential oils or the mixture of essential oils being diffused.
- To use the diffuser in confined spaces or where there are children present only use it in cycles of 10 minutes, with an interval of 45 minutes between each cycle.
- Children should not play with the device. Cleaning and maintenance should not be carried out by children

- without supervision.
- Do not short-circuit the electrical supply.

Instructions

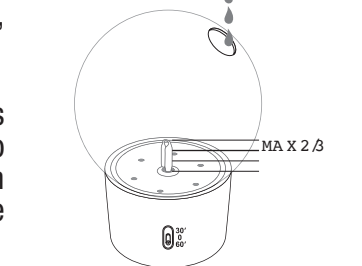
1. Remove the glass top (6) from its wrapping and insert it into the mounting gasket of the wooden base (4), using a vertical movement and rotating towards the right.



2. Add:
a: 20 drops - diffusion 30' Position 2.

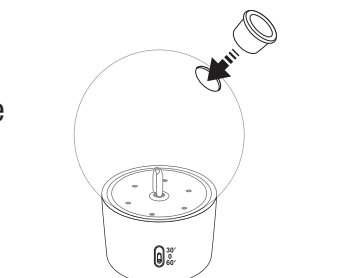


b: 30 drops - diffusion 60' Position 3.

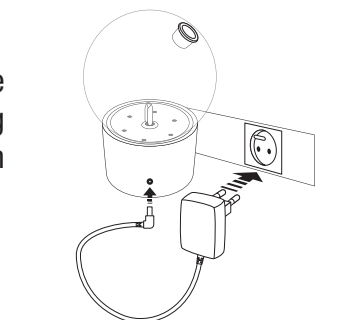


to be poured into the glass top (6), making sure you do not go over the maximum level. This could damage the device.

3. Put the cap (7) on the glass top (6).



4. Insert the power cable into the jack plug (9) and then plug in the adaptor (10).

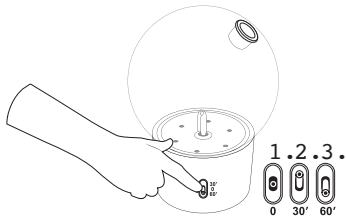


5- Switch:

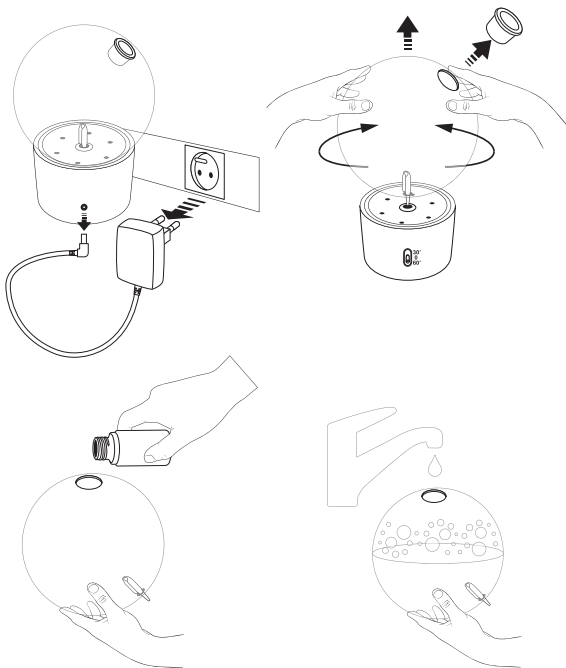
0 Position 1:
switch (1) in the middle: The diffuser is not running

30' Position 2:
switch (1) towards the top: the light comes on and the diffuser runs in cycles (2 minutes ON and 1 minute OFF). After 30 minutes, the diffuser (light and diffusion) switches off.

60' Position 3:
switch (1) towards the bottom: the light comes on and the diffuser runs in cycles (2 minutes ON and 1 minute OFF). After 60 minutes, the diffuser (light and diffusion) switches off.



Maintenance



1- Daily cleaning

In order to prolong the life of your diffuser, it is strongly advised to clean it after each use. To do this:

- Switch off and unplug the device.
- Remove the glass top (6) carefully from the wooden base (2) using a vertical movement and rotating left to right.
- Pour modified alcohol at 60°C into the glass top (6), stir carefully to clean it and then empty it.
- Allow to dry.

2- Deep cleaning

In order to prolong the life of your diffuser, it is strongly advised to give it a deep clean regularly. To do this:

- Switch off and unplug the device.
- Remove the glass top (6) carefully from the wooden base (2) using a rotating movement from left to right.
- Pour warm soapy water into the glass top (6), stir carefully to clean it and then empty it.
- Allow to dry.

Troubleshooting

PROBLEMS	CAUSES	SOLUTIONS
NOT WORKING	The diffuser is not connected.	Check that the adaptor is connected to the socket and the JACK to the base. Press the switch to start the diffusion.
NOT DIFFUSING	The glass top is not inserted correctly into the wooden base.	Position the glass top correctly on the wooden base.
	Very little or not enough essential oil.	Add more essential oil
	Too much essential oil (above maximum level)	Remove the surplus essential oil.
	The cap is blocked.	Clean the cap
	The opening of the nozzle is blocked.	Do a deep clean on the nozzle (See Maintenance: deep clean).

1. In the event of unusual situations such as smoke, a strange smell, unusual noise, etc. any further use could lead to accidents such as fire, electrocution, etc. Unplug the adaptor immediately and contact your local retailer.
2. Never cover the adaptor with cloth, paper, etc., that might interfere with the ventilation, which could lead to over-heating, cause irreparable damage to the diffuser or even cause a fire.
3. The user is not authorised to dismantle or repair the device. If the diffuser needs to be inspected or repaired, please contact the local retailer.

Features:

Type	of nebulising diffuser
Capacity / weight	414 gr
Materials	glass & wood
Length of cable	150 cm
Dimensions	- the glass top dia: 140 mm
	- base: 100x60 mm
LED	off-white colour
Power supply	5V \approx 1000 mA
Accessories	Power adaptor

Guarantee

This diffuser is guaranteed for one year under correct use, in accordance with the instructions provided in this manual. In any other case the guarantee will not be accepted. The warranty is valid for one year after the purchase date, during which time the company will offer free repairs for any problem incurred under normal use of the device. If a problem arises within the warranty period, please contact your retailer to arrange for repair or exchange of your faulty device.

Product : bulle nebulising diffuser

Date: / /

Pranarôm
Immeuble le Leeds -253
Boulevard du Leeds
F-59777 Lille

37 Avenue des Artisans
B-7822 Ghislenghien

www.pranarom.com

38866NE SEPT2019IM

Stamp

